

INVERBOOST® UX

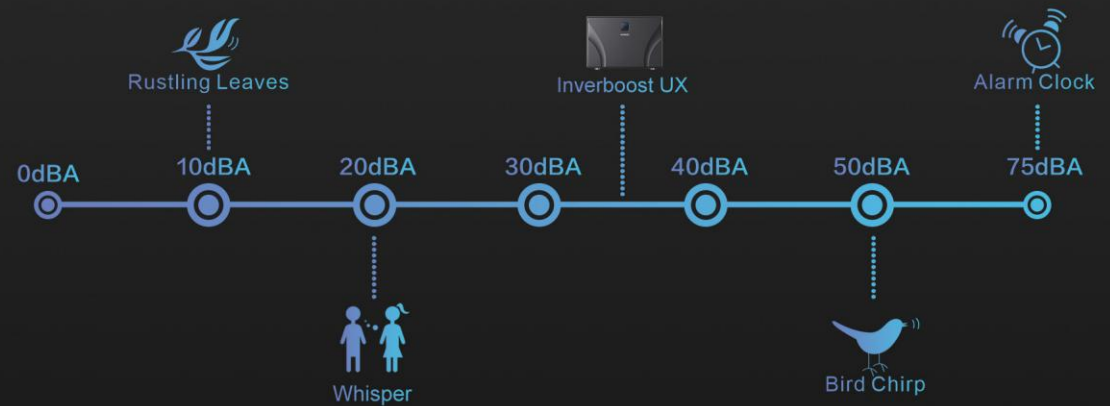
Ultra quiet operation beyond your expectation



INNOVATIVE CHILL WIND PROOF DESIGN FOR BETTER EXPERIENCE



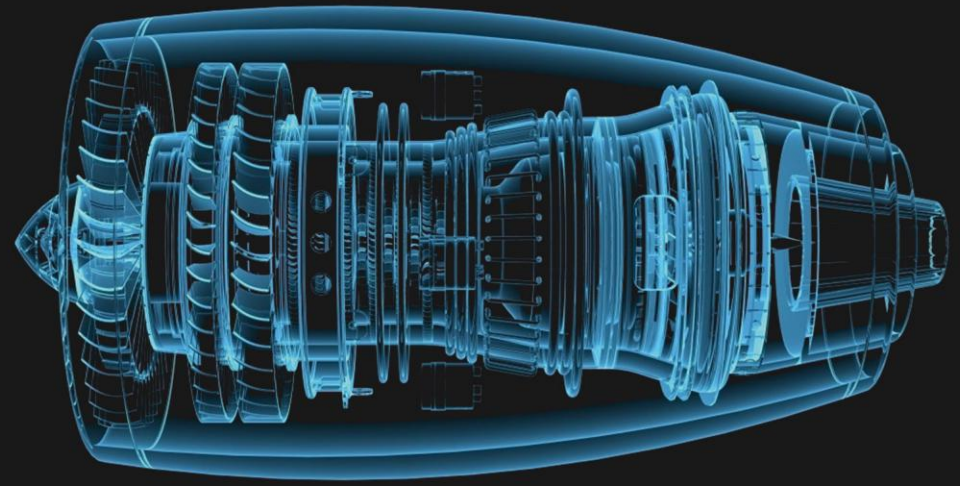
Quiet operation beyond your expectation



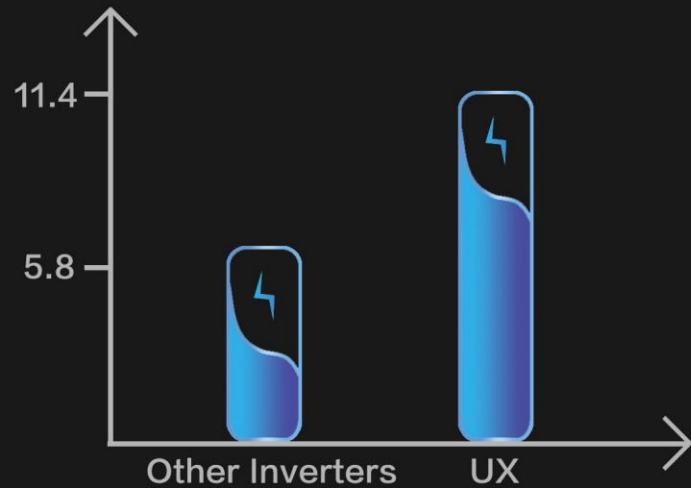
INVERBOOST

Technology Since 2013

8 years' development & improvement
Excellent reliability proved by the
professional pool heat pump market.



C.O.P at 50 % capacity



Performance at Air 28°C, Water 28 °C, Humidity 80%

SUPER EFFICIENCY

More energy saving
Maximise energy efficiency
extend your all year round swimming season

UNIQUE DESIGN WITH GRACEFUL CURVES

- Premium ASA materials
- Outstanding weather UV resistance

FOUR SEASONS OPERATION



TURBO MODE

Intelligent operation to achieve extra 20% heating capacity, fast heating & excellent performance for all year round swimming.

SMART MODE

Dynamically working to get 20% -100% of heat output to maintain your pool temperature according to different climate.

SILENT MODE

The best combination of performance and silence. It achieves the highest energy efficiency and greatly improves customers' experience.

BUILT-IN WIFI FUNCTION

- Easy control via APP
- 10 lanagues available

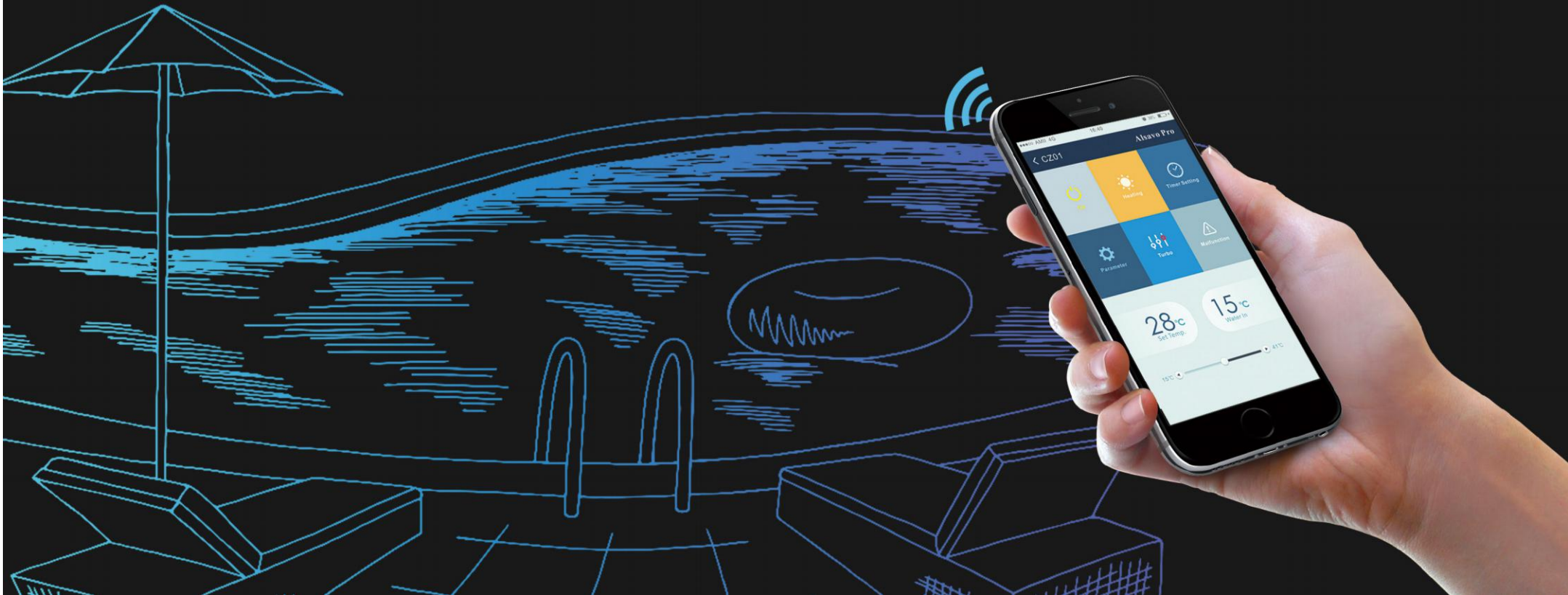
Intelligent and user friendly

Touch screen controller



Timer setting

Data checking



| Zealux model | | UX07 DCsi32 | UX09 DCsi32 | UX11 DCsi32 | UX14 DCsi32 | UX17 DCsi32 | UX21 DCsi32 | UX21 DCsi32T | UX26 DCsi32 | UX30 DCsi32 | UX26 DCsi32T | UX30 DCsi32T | UX35 DCsi32T | UX40 DCsi32T | | | | |
|--|-------------------|-----------------------------|----------------|----------------|----------------|----------------|----------------|-----------------|----------------------------|----------------|-----------------|-----------------|-----------------|-----------------|---------------|--|---------------|--|
| Adviced pool volume(with pool cover) | m ³ | 10-26 | 12-35 | 16-60 | 18-66 | 25-85 | 58-120 | 68-120 | 95-132 | 12-160 | 65-132 | 12-160 | 85-160 | 85-180 | | | | |
| * Performance at Air 28°C, Water 28°C, Humidity 80% | | | | | | | | | | | | | | | | | | |
| urbe Heating capacity | KW | 7 | 9 | 11 | 14 | 17 | 21 | 21 | 26 | 30 | 26 | 30 | 35 | 40 | | | | |
| Smart Heating capacity | KW | 5 | 7 | 10 | 11 | 11 | 18 | 16 | 21 | 25 | 21 | 25 | 30 | 35 | | | | |
| Power consumption | KW | 0.99-0.13 | 1.27-0.14 | 1.55-0.17 | 1.97-0.22 | 2.39-0.27 | 2.96-0.33 | 2.96-0.33 | 3.66-0.29 | 4.17-0.47 | 3.62-0.29 | 4.17-0.47 | 4.95-0.55 | 5.61-0.63 | | | | |
| C.O.P. | | 16-7.1 | 16-7.1 | 18-7.4 | 16-7.1 | 16-7.2 | 16-7.1 | 16-7.1 | 16-7.1 | 16-7.1 | 16-7.1 | 16-7.1 | 16-7.1 | 16-7.1 | | | | |
| C.O.P. in TURBO Mode | | 7.1 | 7.1 | 7.4 | 7.1 | 7.2 | 7.1 | 7.1 | 7.1 | 7.1 | 7.1 | 7.1 | 7.1 | 7.1 | | | | |
| C.O.P. at 50% capacity | | 11.1 | 11.2 | 11.8 | 11 | 11.8 | 11.2 | 11.2 | 11.2 | 11.2 | 11.2 | 11.2 | 11.2 | 11.4 | | | | |
| * Performance at Air 15°C, Water 26°C, Humidity 70% | | | | | | | | | | | | | | | | | | |
| urbe Heating capacity | KW | 5 | 7 | 8.5 | 9.5 | 12 | 15.5 | 15.5 | 18 | 20 | 16 | 20 | 24 | 28 | | | | |
| Smart Heating capacity | KW | 4 | 5.5 | 7 | 8 | 10.5 | 13.5 | 13.5 | 16 | 18 | 16 | 18 | 22 | 24 | | | | |
| Power consumption | KW | 0.98-0.15 | 1.31-0.21 | 1.57-0.26 | 1.96-0.23 | 2.31-0.37 | 3.01-0.47 | 3.06-0.47 | 3.53-0.55 | 3.92-0.61 | 3.55-0.55 | 3.85-0.61 | 4.62-0.73 | 5.38-0.85 | | | | |
| C.O.P. | | 8.2-5.1 | 8.2-5.1 | 8.2-5.1 | 8.21-5 | 8.5-5.2 | 8.3-5.1 | 8.3-5.1 | 8.2-5.1 | 8.2-5.1 | 8.2-5.1 | 8.2-5.1 | 8.2-5.2 | 8.3-5.2 | | | | |
| C.O.P. in TURBO Mode | | 5.1 | 5.1 | 5.1 | 5 | 5.2 | 5.1 | 5.1 | 5.1 | 5.1 | 5.1 | 5.1 | 5.2 | 5.2 | | | | |
| C.O.P. at 50% capacity | | 7.1 | 7.1 | 7.1 | 7 | 7.8 | 7.4 | 7.4 | 7.2 | 7.2 | 7.2 | 7.2 | 7.2 | 7.4 | | | | |
| Compressor type | | Inverter compressor | | | | | | | | | | | | | | | | |
| Voltage | V | 220-240V/50Hz or 60-Hz/1-PT | | | | | | 380V 50-Hz/3-PT | 220-240V/50Hz or 60-Hz 11H | | | 390V 50-Hz/3-PT | | | | | | |
| Rated current | A | 7.7 | 5.6 | 6.9 | 8.7 | 10.6 | 13.1 | 5.3 | 16.3 | 18.5 | 6.5 | 7.5 | 8.8 | 10.1 | | | | |
| Max current | A | 7 | 9 | 10.5 | 13.5 | 15.5 | 19.5 | 8.5 | 24 | 28 | 10 | 12 | 17 | 17 | | | | |
| Minimum fuse | A | 9 | 10 | 12 | 15 | 16 | 22 | 10 | 28 | 32 | 12 | 15 | 17 | 20 | | | | |
| Adviced water flux | m ³ /h | 2.5 | 3 | 3.7 | 4 | 5 | 6 | 6 | 8 | 10 | 8 | 10 | 15 | 18 | | | | |
| Heat exchanger | | with titanium exchanger | | | | | | | | | | | | | | | | |
| Water connection | mm | 50 | | | | | | | | | | | | | | | | |
| For quantity | | 1 | | | | | | 2 | | | | | | | | | | |
| Ventilation type | | Horizontal | | | | | | | | | | | | | | | | |
| Sound pressure at 10m | dB(A) | 16.8-24.1 | 17-25.8 | 17.8-26.2 | 21.7-26.7 | 22.6-28.1 | 22.9-30.6 | 22.9-30.6 | 23.1-31.8 | 23.2-32.4 | 23.1-31.8 | 23.2-32.4 | 23.4-32.8 | 23.4-33.4 | | | | |
| Sound pressure at 1m | dB(A) | 35.2-44 | 35.7-45 | 36-46.2 | 38-47.3 | 39.5-49.8 | 40-51 | 40-51 | 41-51.6 | 42-51.8 | 41-51.6 | 42-51.8 | 42.6-52 | 43.1-53.2 | | | | |
| Net weight | kg | 65 | 70 | 73 | 78 | 96 | 117 | 117 | 125 | 130 | 125 | 130 | 135 | 139 | | | | |
| Gross weight | kg | 67 | 73 | 78 | 83 | 113 | 135 | 135 | 145 | 148 | 145 | 148 | 150 | 154 | | | | |
| Net dimension | mm | 905*410*585 | | | 1025*415*685 | | | 1070*435*890 | | | 1035*435*1290 | | 1110*450*1410 | | 1035*435*1290 | | 1110*450*1410 | |
| Packing dimension | mm | 960*430*730 | | | 1080*500*830 | | | 1125*520*1040 | | | 1080*520*1440 | | 1165*535*1560 | | 1080*520*1440 | | 1165*535*1560 | |

ZEALUX ELECTRIC LIMITED

📍 Science and technology zone, Xingtan industrial park, Xingtan, Shunde, Foshan, China

🌐 www.zealux.com

✉ sales@zealux.com

☎ +86-20-86000676

🏠 Europe service center

